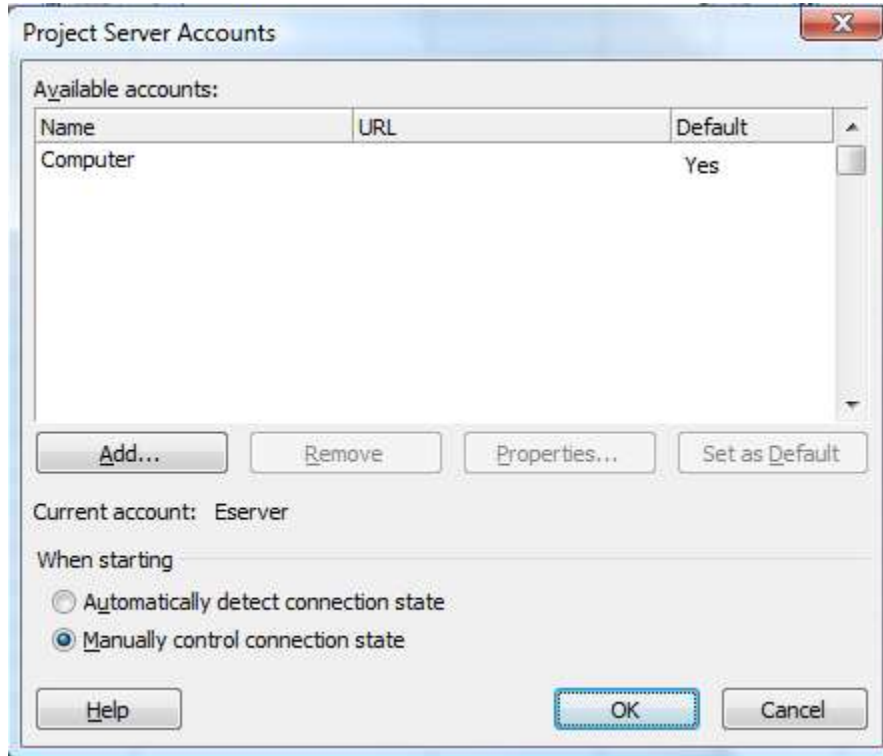




PMP Specialists

After selecting Microsoft Office Project Server Accounts a box like this should appear. Make sure that “Manually control connection state” is selected. You want to manually control your connections in case you have more than one Project Server that you connect to or if you want to easily access the computer itself without connecting to a Server.



Click on “Add” to get these options:



PMP Specialists

Account Properties

Account Name:
[]

Project Server URL:
[]

When connecting

Use Windows user account
 Use Forms authenticated account:

User name: []

Set as default account

OK Cancel

- In the “Account Name” type a friendly name that will remind you of this instance.
- Type the URL of your server (<http://servername/ProjectServer/>) in the “Project Server URL” line.
- Normally, you will leave the default of “Use Windows User account” for the “When connecting” selection. If you are using “Forms Authentication” you will have the userid and password that you should use.
- Select whether or not this will be your default account.

When complete, it should look like similar to this:

Account Properties

Account Name:
Litware

Project Server URL:
http://epm2007demo/litware

When connecting

Use Windows user account
 Use Forms authenticated account:

User name: []

Set as default account

OK Cancel



PMP Specialists

Confirm again on the “Project Server Accounts” box that “Manually control connection state” is selected before hitting ok.

Exit out of Project Professional and then open it again. This time, when it opens, a selection box should appear that will look similar to this:

The screenshot shows a 'Login' dialog box with the following elements:

- Profile:** A dropdown menu currently showing 'Litware'.
- User Name:** A text input field containing the placeholder text 'Check credentials checkbox to enter name'.
- Password:** An empty text input field.
- Enter User Credentials
- Load Summary Resource Assignments
- Buttons: 'Work Offline', 'OK', and 'Cancel'.

Since we selected “default” earlier, the Profile should already have our friendly name in it. If not, use the drop down next to the Profile option to select the name of the Project Server that you just created. If this is the first time you are logging in via this option or if the “Enter User Credentials” option is checked, then enter your username and password. Select “Load Summary Resource Assignments”. Click on “ok” when you are ready.

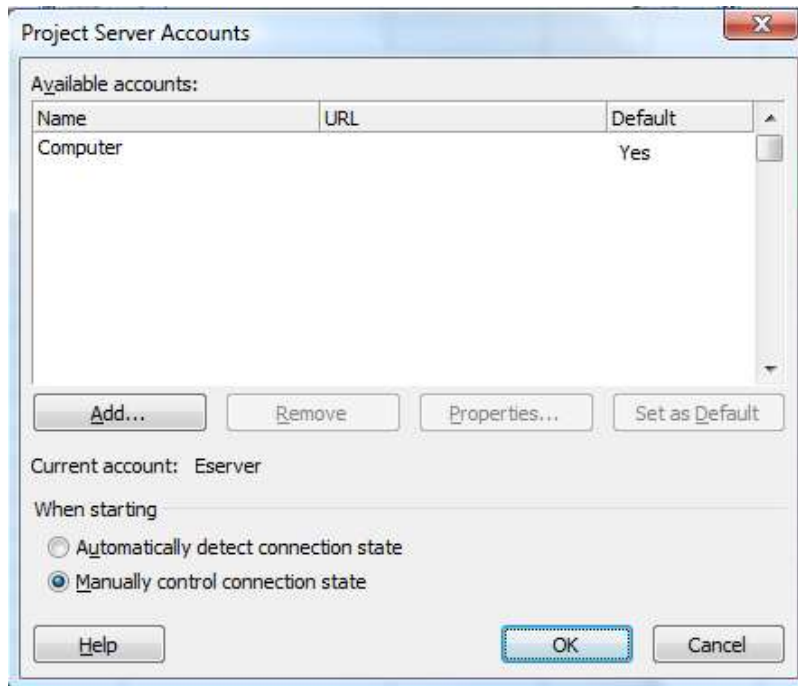
If you use the drop-down next to Profile and select “computer” or “work offline” then you will be opening Project Professional on your computer only and you will be unable to access the server or server options until you exit out of Project Professional and re-enter by this method.



PMP Specialists

If the first method of accessing Project Server doesn't work for some reason, then the second option to link to the server is to go to the server account setup through the program menu.

Select start on your desktop, go to All Programs, Microsoft Office, Microsoft Office Tools, Microsoft Office Project Server 2007 Accounts. This will take you through the exact same sequence of steps as outlined in the first method above and copied here:



Enter the same information as listed in the first option of connection Professional to Server.